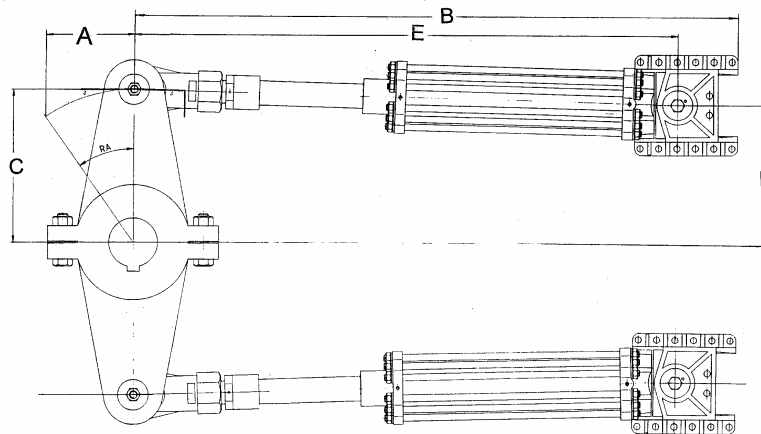


**MODEL 7100  
10" HEAVY DUTY CYLINDER**

The 7100 Steering Cylinder has a 10" ID with a 5" stainless steel hard-chromed piston rod. The parts are either bronze or steel castings with the cylinder barrel made from pre-honed steel tubing. Spherical bearings are available at both ends of the cylinder. The rear-type trunnion mount allows for extremely easy installation since the pre-drilled base plate provides the flat and solid fittings to readily install this cylinder in the steering gear compartment. A foundation plate is required to withstand the strain imposed by the cylinder of approximately 300,000 pounds (150 tons) force. The cylinder is of the unbalanced type and therefore requires a minimum of two units per steering system. Grease fittings are provided on both ends for spherical bearings lubrication.



RUDDER ANGLE (RA) 35°

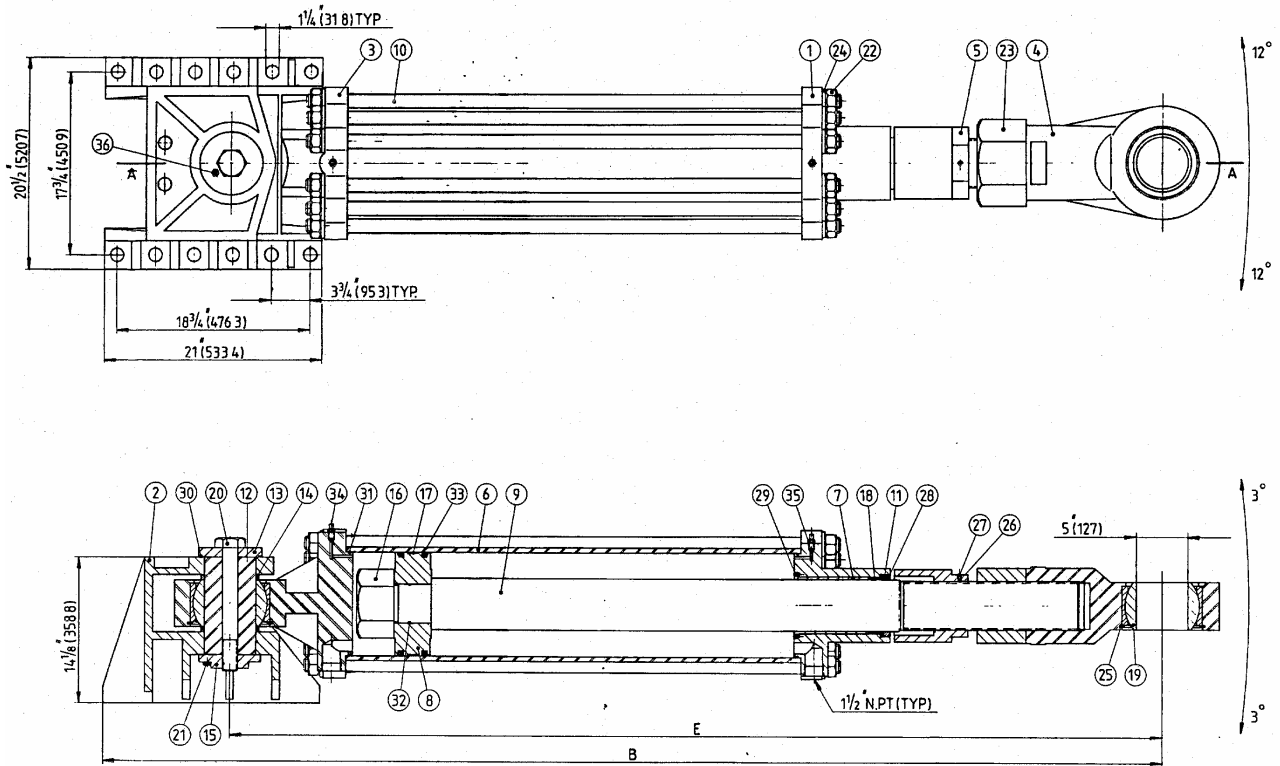
MODEL	TORQUE		STROKE		DISPLACEMENT		A		B		C		D		E	
	lbs.ft.	kgm	in	mm	in <sup>3</sup>	cm <sup>3</sup>	in	mm	in	mm	in	mm	in	mm	in	mm
7100	588874	81486	36	914	4948	81083	18	457	120.51	3061	31.38	797	28.54	725	108.32	2751
	687020	95069	42	1067	5773	94603	21	533	129.51	3290	36.61	930	33.30	846	117.32	2980
	785165	108651	48	1219	6597	108105	24	610	138.51	3518	41.84	1063	38.06	967	126.32	3209
	883311	122232	54	1372	7422	121625	27	686	147.51	3747	47.07	1196	42.81	1087	135.32	3437
	981457	135813	60	1524	8247	135144	30	762	156.51	3975	52.30	1328	47.57	1208	144.32	3666
	1079602	149394	66	1676	9071	148647	33	838	165.51	4204	57.53	1461	52.33	1329	153.32	3894
	1177748	162976	72	1829	9896	162166	36	914	174.51	4433	62.76	1594	57.08	1450	162.32	4123

RUDDER ANGLE (RA) 45°

7100	412334	57058	36	914	4948	81083	18	457	120.51	3061	25.46	647	21.73	552	108.32	2751
	481056	66568	42	1067	5773	94603	21	533	129.51	3290	29.70	754	25.35	644	117.32	2980
	549779	76078	48	1219	6597	108105	24	610	138.51	3518	33.94	862	28.97	736	126.32	3209
	618501	85588	54	1372	7422	121625	27	686	147.51	3747	38.18	970	32.59	828	135.32	3437
	687223	95097	60	1524	8247	135144	30	762	156.51	3975	42.43	1078	36.22	920	144.32	3666
	755946	104607	66	1676	9071	148647	33	838	165.51	4204	46.67	1185	39.84	1012	153.32	3894
	824668	114117	72	1829	9896	162166	36	914	174.51	4433	50.91	1293	43.45	1104	162.32	4123

NOTE: Torque is based on two cylinders & 2000 psi

# DIMENSIONS AND PARTS LIST MODEL 7100



ITEM	QTY	PART NO.	DESCRIPTION	ITEM	QTY	PART NO.	DESCRIPTION
1	1	7100-0001	Front End Cap	19	2	7100-0019	Spherical Bearing
2	1	7100-0002	Foot	20	1	7100-0020	Rear Hex Cap Screw
3	1	7100-0003	Rear End Cap	21	2	1001-1224	Hex Head Screw
4	1	7100-0004	Rod End	22	24	1022-0172	Tie Rod Hex Nut
5	1	7100-0005	Stop Nut	23	1	1022-0476	Rod End Hex Nut
6	1	7100-0006	Tube	24	24	1023-0325	Lock Washer
7	1	7100-0007	Bushing	25	2	1029-3800	Snap Ring
8	1	7100-0008	Piston	26	2	2542-0008	Friction Pad
9	1	7100-0009	Piston Rod	27	2	1016-1206	Hex Socket Set Screw
10	12	7100-0010	Tie Rod	28	1	1016-1106	Hex Socket Set Screw
11	1	7100-0011	Packing Nut	29	12	1016-1108	Hex Socket Set Screw
12	1	7100-0012	Rear Bearing Sleeve	30	1	1101-0254	"O" Ring
13	1	7100-0013T	Upper Sleeve Retainer	31	2	1101-0273	"O" Ring
14	2	7100-0014	Rear Spacer	32	1	1101-0238	"O" Ring
15	1	7100-0013B	Bottom Sleeve Retainer	33	2	1102-0049	"U" Cup
16	1	7100-0016	Piston Retaining Nut	34	2	7096-0034	Bleed Screw
17	1	7100-0017	Wear Ring	35	2	1301-0005	Ball
18	1	7100-0018	"V" Packing	36	1	1501-0301	Grease Nipple