

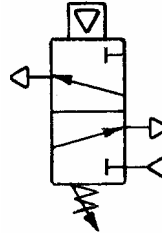
3324 NORMALLY CLOSED ADJUSTABLE RELAY VALVE 1/4" NPT

DESCRIPTION

The 3324 is normally closed adjustable poppet-type valve which is controlled by a piston and spring arrangement. The spring keeps this valve in a closed position and pilot pressure will open the valve, allowing the air flow from the source of supply to the device actuated. The maximum pilot pressure is 700 psi. The maximum control pressure (pneumatic) is 200 psi. Many of these valves are used for clutch and throttle interlocks in marine propulsion applications, where the gearbox has to accumulate hydraulic pressure to lock up the forward or reverse clutch. After clutch lock up, the hydraulic pressure will open this valve allowing the throttle signal to go through to the engine speed setting device.

This valve is also available with dual piloting on special request.

SCHEMATIC SYMBOL



SPECIFICATIONS

Weight: 3.5 lb. (1.6 kg)

Materials: die cast silicon bronze and stainless steel hardware

Maximum Supply Pressure: 200 psi (13.8 bar)

Maximum Pilot Pressure: 700 psi (48 bar)

Operating Temperature Range: -40°C to +90°C

Pipe Port Size: 1/4" NPT

ORDERING INFORMATION

Model Designation --

A – Standard inlet cap

B – With flow control inlet cap

C – Heavy spring, 40-120 psi range

CC – Extra heavy spring, 100-160 psi range

D – Light spring, 25-60 psi range

DD – Extra light spring, 10-20 psi range

E – Left hand model

F – Right hand model

The standard Model 3324 Relay Valve is supplied as follows:

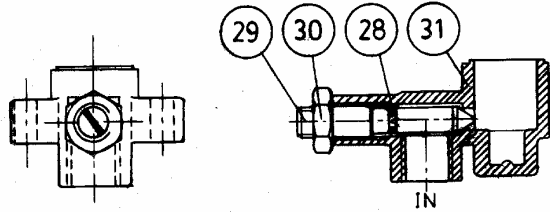
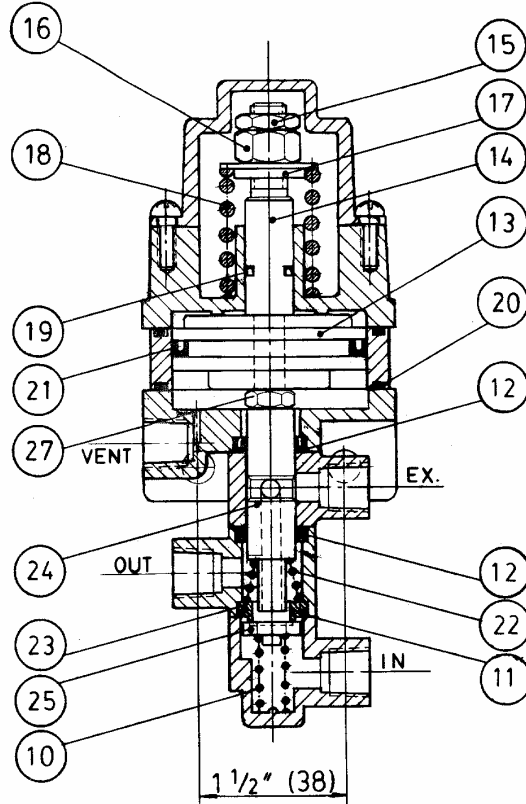
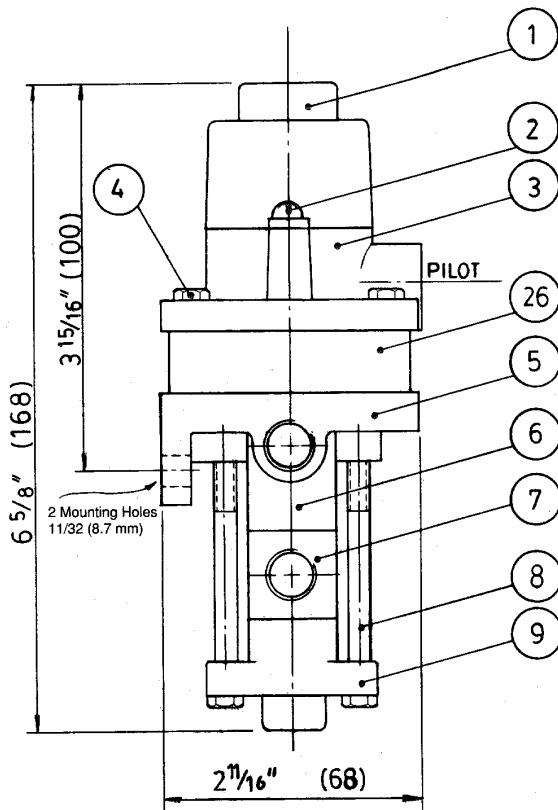
- Standard inlet cap
- Extra heavy spring 100-160 psi
- Left or right hand model

To order, state model number followed by desired designation letter codes.

Example: 3324 ACCE for left hand model

A repair kit 3324-RK with all the seals is also available.

DIMENSIONS AND PARTS LIST MODEL 3324



ALTERNATIVE INLET CAP WITH FLOW CONTROL

ALL DIMENSIONS IN INCHES (mm)

ITEM	QTY.	PART No.	DESCRIPTION
1	1	3326-0001	End Cap
2	2	1010-0806	Round Hd. Phillips Screw
3	1	3326-0002	Pilot Port
4	4	1001-1020	Hex. Hd. Capscrew
5	1	3325-0002	Vent Port L.H.
5	1	3325-0013	Vent Port R.H.
6	1	3325-0008	Exhaust Port
7	1	3325-0009	Outlet Port
8	2	1001-1044	Capscrew
9	1	3325-0010	Inlet Cap
10	1	1201-0009	Spring
11	1	1101-0016	"O" Ring
12	2	1102-0005	"U" Cup
13	1	3326-0008	Piston
14	1	3326-0010	Spool
15	1	1022-0212	Jam Nut
16	1	1022-0112	Nut
17	1	3326-0005	Retainer
*18	1	1201-0050	Spring 10-20 PSI
*18	1	1201-0010	Spring 25-60 PSI
*18	1	1201-0012	Spring 40-120 PSI
18	1	1201-0030	Spring 100-160 PSI
19	1	1102-1001	"U" Cup
20	2	1101-0139	"O" Ring
21	1	1102-0021	"U" Cup
22	1	1201-0016	Spring
23	1	3804-0003	Seat
24	1	3326-0007	Spool
25	1	3804-0004	Poppet
26	1	3326-0009	Spacer
27	1	1022-0261	Jam Nut
*28	1	1101-0008	"O" Ring
*29	1	3325-0011	Needle
*30	1	1022-0262	Jam Nut
*31	1	3325-0012	Inlet Cap

* Optional