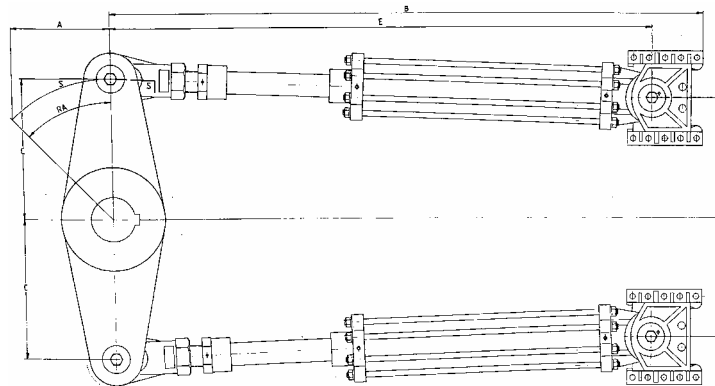


7098 HEAVY DUTY CYLINDERS

The 7098 Cylinder has an 8" ID with a 4" stainless steel hard-chromed piston rod and is rated at 2000 psi operating pressure. Spherical bearings are provided on both ends to allow for any misalignment during installation. Rudder stop nuts are provided to allow for precise adjustment during installation which will ensure that the pistons will bottom out either against the cylinder head or the stop nut. Replaceable

"V" packing seals are provided at the rod end with an adjustable ring nut. These cylinders are available in pre-honed steel tubes and parts made either in bronze or steel castings. The tie rods are made of stainless steel. Because of the cylinder's rugged construction, many years of trouble-free service can be expected. The standard seals are easily replaceable.



Rudder Angle (RA) = 35°

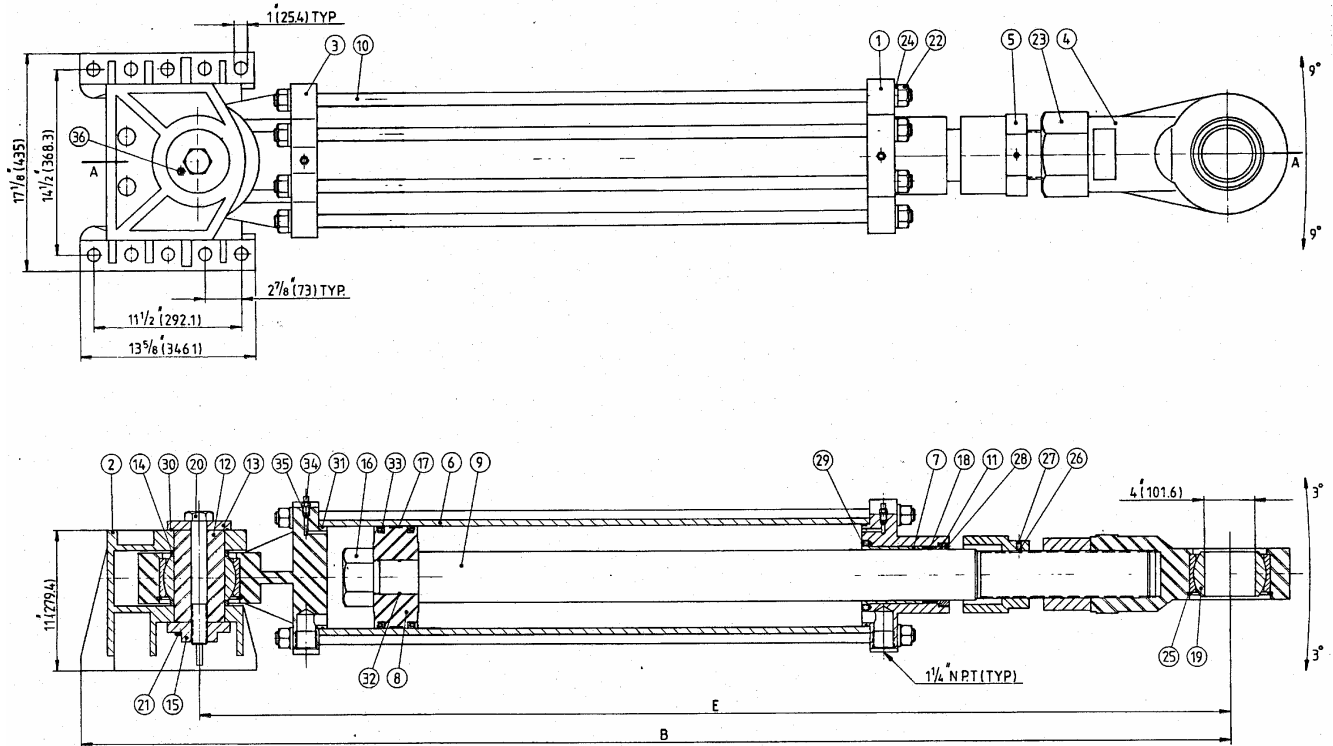
STROKE		TORQUE		DISPLACEMENT		A		B		C		D		E	
in.	mm	lb-ft	kg-m	in3	cm3	in.	mm	in.	mm	in	mm	in	mm	in	mm
36	914	376879	52152	3167	51898	18	457	106.6	2707	31.4	797	28.5	725	97.1	2467
42	1067	439693	60844	3695	60550	21	533	115.6	2935	36.6	930	33.3	846	106.1	2696
48	1219	502506	69536	4222	69186	24	610	124.6	3164	41.8	1063	38.1	967	115.1	2924
54	1372	565319	78228	4750	77839	27	686	133.6	3392	47.1	1196	42.8	1087	124.1	3153
60	1524	628132	86920	5278	86491	30	762	142.6	3621	52.3	1328	47.6	1208	133.1	3382

Rudder Angle (RA) = 45°

36	914	263894	36517	3167	51898	18	457	106.6	2707	25.5	647	21.7	552	97.1	2467
42	1067	307876	42604	3695	60550	21	533	115.6	2935	29.7	754	25.4	644	106.1	2696
48	1219	351858	48690	4222	69186	24	610	124.6	3164	33.9	862	29.0	736	115.1	2924
54	1372	395841	54776	4750	77839	27	686	133.6	3392	38.2	970	32.6	828	124.1	3153
60	1524	439823	60862	5278	86491	30	762	142.6	3621	42.4	1078	36.2	920	133.1	3382

Note: Torque is based on two cylinders and 2000 psi

Model 7098



PARTS LIST

Item	Qty	Part No.	Description	Item	Qty	Part No.	Description
1	1	7098-0001	Front end cap	19	2	7098-0101	Spherical bearing
2	1	7098-0002	Foot	20	1	1001-22164	Hex bolt
3	1	7098-0003	Rear end cap	21	2	1001-1220	Hex head screw
4	1	7098-0004	Rod end	22	16	1022-0172	Hex nut
5	1	7098-0005	Stop nut	23	1	1022-0192	Hex nut
6	1	7098-0006	Tube	24	16	1023-0325	Lock washer
7	1	7098-0007	Rod bushing	25	2	1029-3600	Snap ring
8	1	7098-0008	Piston	26	2	2542-0008	Friction pad
9	1	7098-0009	Piston rod	27	2	1016-1204	Hex socket set screw
10	8	7098-0010	Tie rod	28	1	1016-1012	Hex socket set screw
11	1	7098-0011	Packing nut	29	10	1016-1208	Hex socket set screw
12	1	7098-0012	Rear bearing sleeve	30	1	1101-0156	"O" ring
13	1	7098-0013T	Upper sleeve retainer	31	2	1101-0265	"O" ring
14	2	7098-0014	Rear spacer	32	1	1101-0230	"O" ring
15	1	7098-0013B	Bottom sleeve retainer	33	2	1102-0048	"U" cup
16	1	7098-0016	Piston retaining nut	34	2	7038-0034	Bleed screw
17	1	7098-0017	Wear ring	35	2	1301-0014	Ball
18	1	7098-0018	"V" packing	36	1	1501-0301	Grease nipple