

# 7020 SAFETY AND BYPASS VALVE

The purpose of this valve is to safeguard against damage to the steering gear or rudder, from hydraulic shocks and over pressure. This valve also incorporates the function of a bypass valve. This is very useful when bleeding the system, or rotating the rudder by hand. The safety and bypass valve is installed near the steering cylinder between the port and starboard lines. The design of the valve allows plumbing directly into lines without the necessity of pipe tees.

## Weight

3.7 lbs. (1.7 kg)

## Specifications

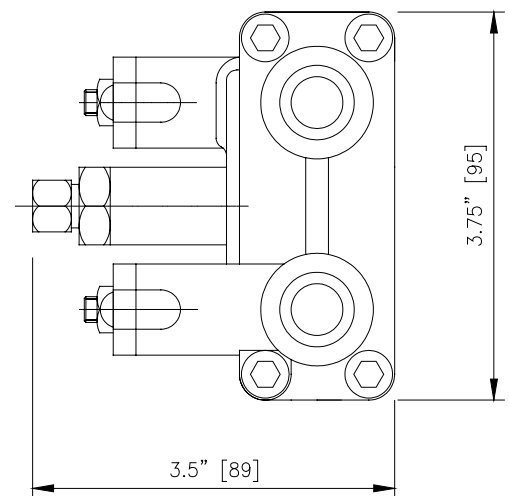
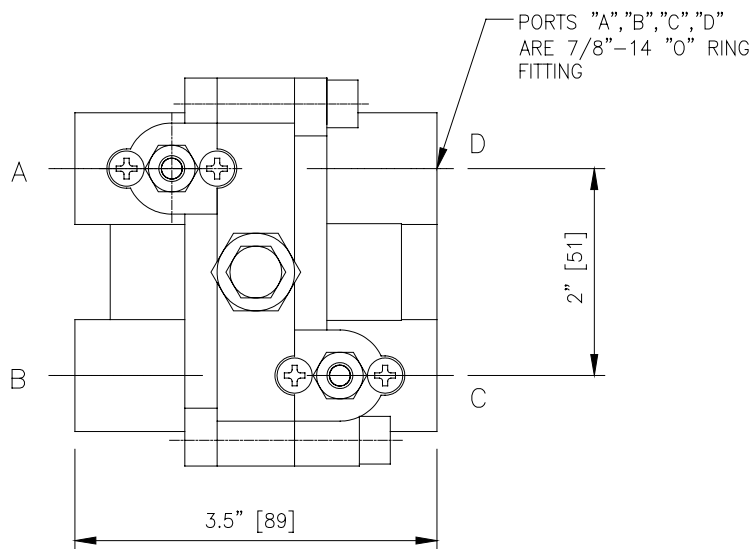
Relief pressure: 1500 PSI (103 bar)

Pipe port size: 7/8"-14 "O" RING FITTING

Flow capacity: 1/2" Full

## Ordering Information

To order state model number 7020.



## **7020 SAFETY and BYPASS VALVE**

The Kobelt product numbers are made up of FOUR NUMBERS on the left hand side identifying the product model; follow by a combination of letters and numbers for VARIOUS FEATURES AND OPTIONS. The features and options are generally listed from left to right and sorted alphabetically in ascending order and then numerically.

When you order, select your letter codes carefully for each product.

LETTER CODE.	DESCRIPTION
	No letter codes for this product
7020	Safety and bypass valve The valve is pre-set by the factory at 1500 PSI (103 bar) eg.: 7020

## **SAFETY AND BYPASS VALVE**

### **SAFETY**

The Kobelt model 7020 safety valve is a double acting cross line relief valve. This valve is generally located close to the steering cylinder(s). The hydraulic oil flows through the valve in both directions. The main purpose of this valve is to protect the hydraulic lines and cylinder(s) from high pressure and shock loads. The high pressure and corresponding shock loads can occur when the vessel rudders hits an obstruction. If this occurs, the safety (relief) valve will lift allowing the hydraulic oil to quickly flow across the valve to the opposite side of the steering cylinder. When the cylinder hits bottom, then you depend on the brut strength of the cylinder(s) and its mounting to hold the equipment in place. When the system pressure returns to normal, the relief valve in the 7020 will re-seat and normal steering can be resumed.

### **BYPASS**

The Kobelt 7020 valve also includes a bypass function. The bypass valve is normally closed. The centre 9/16 hex head is turned fully clock wise and secured. The bypass can be opened for a number of reasons. With the bypass open, you can bleed the system by allowing the oil to circulate in one direction that helps to remove air from the system, or operate the emergency tiller.

### **EMERGENCY TILLER STEERING**

The local marine safety inspector from time to time may ask you to demonstrate the operation of the emergency steering. After installing the emergency tiller, open the bypass on the Kobelt 7020 valve that allows you to move the rudder with the emergency tiller.