



**MODEL 2062
ONE STATION, TWIN ENGINE,
SINGLE LEVER, ELECTRICAL
CLUTCH CONTROL
WITH MECHANICAL PUSH
PULL FOR ENGINE SPEED**

The 2062 was designed for reverse gears with provision for electrical shift from neutral to forward and reverse. The mid handle position will provide neutral. The two micro switches controlled by the main cam have a maximum capacity of 5 Amp and of 250 AC volts. The speed control cable can be either of the 30 or 40 series (see ordering information for adaptor kits). There are four different connecting points for the speed control cable with maximum strokes as indicated in the drawing at the back page. The travel stop screws will permit reduction of the maximum handle travel for fine adjustment. The control head is also equipped with adjustable detents for all gear positions as well as adjustable friction plugs.

FEATURES

- made from corrosion free die cast silicon brass and stainless steel hardware
- with removable dome for ease of installation
- optional safety switch which prevents engine starting unless control head is in neutral (centre) position. Available either pre-installed or in kit form

ORDERING INFORMATION

Model Designations:

- B - two long handles with detents
- D - two long handles with detent and friction
- E - two short handles with detents
- G - two short handles with detent and friction
- J - with two neutral safety switches
- K - with chrome finish cover and handles
- L - with brass finish cover and handles
- M - with black epoxy finish cover and chrome handles

The standard model 2062 control head is supplied as follows:

- with two long handles with frictions and detents
- without neutral safety switches
- with chrome finish cover and handles

To order, state Model number followed by Model designation letter codes:

Example: 2062-DK for standard 2062 control head.

NOTE:

Cable connector kits are ordered separately. Each push pull cable end attached to the control head requires one kit.

Ordering Numbers:

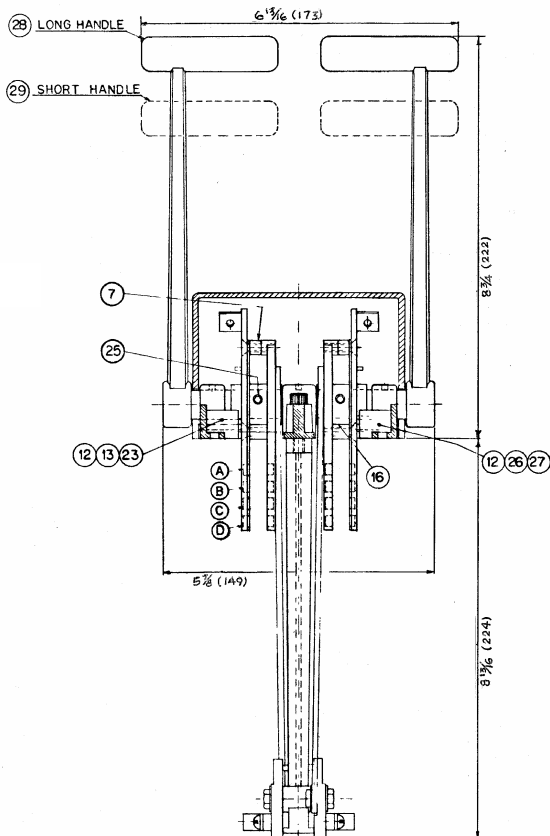
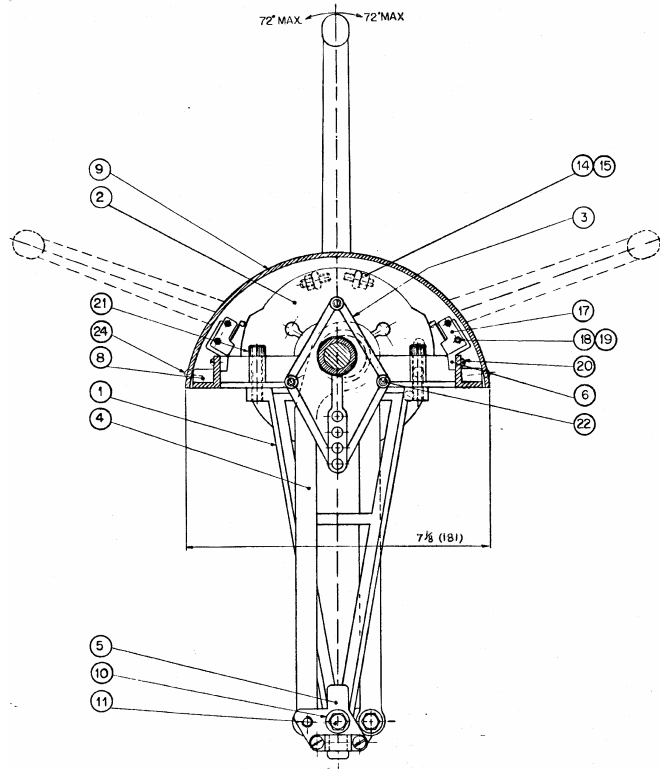
- 2062-0901 - #10-32 (30 series) connector kit
- 2062-0902 - ¼-28 (40 series) connector kit
- 2062-0903 – Neutral safety switch kit

Weight: 9.7 lb. (4.4 kg)

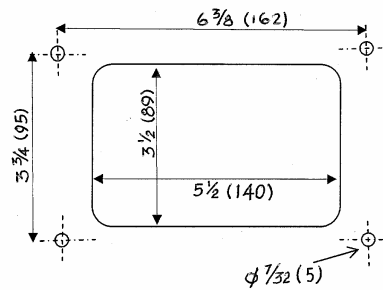
DIMENSIONS AND PARTS LIST MODEL 2062

ITEM	QTY	PART NUMBER	DESCRIPTION
1	1	2061-0001	Support
2	2	2061-0002	Pivot Plate
3	2	2061-0003	Retainer Plate
4	2	2061-0004	Lever
5	2	2061-0005	Cable Adaptor Swivel
6	4	2061-0006	Micro Switch Adaptor
7	2	2061-0007	Spacer
8	1	2012-0001	Frame
9	1	2012-0002	Dome
10	4	1023-0112	Washer
11	4	1001-1005	Hex Hd. Cap Screw
12	4	1016-1204	Set Screw
13	2	1201-0003	Spring
14	4	1016-0808	Set Screw
15	4	1022-0108	Nut
16	2	1016-0804	Set Screw
17	4	311-SM6-T	Micro Switch
18	8	1004-0208	Round Hd Slotted Cap Screw
19	8	1022-0102	Nut
20	4	1010-0606	Round Hd Philips Cap Screw
21	2	1002-1010	Socket Hd Cap Screw
22	6	1015-0808	Flat Hd Socket Cap Screw
23	2	2009-0011	Detent Plunger
24	2	1005-0808	Round Hd Screw
25	2	1024-0814	Spring Pin
26	2	1201-0002	Spring
27	2	2542-0008	Friction Plug
28	2	2011-0003	Long Handle
**29	2	2011-0004	Short Handle

** Optional



All Dimensions in inches (mm)



CUT-OUT DIMENSIONS

NOTE:

Maximum Stroke in Holes

A = 1.15"

B = 1.48"

C = 1.83"

D = 2.18"