

3323 NORMALLY OPEN ADJUSTABLE RELAY VALVE

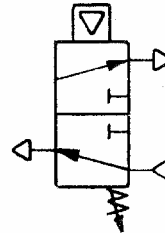
DESCRIPTION

The 3323 is a poppet-type normally open relay valve. The spring keeps this valve in an open position and pilot pressure will close the valve, stopping the air flowing from the source of supply to the device actuated. Because of the "U" cup and piston arrangement, this valve lends itself extremely well for high pressure pilot signals, both hydraulic and pneumatic. The maximum operating pressure for the pilot chamber and piston is 700 psi. The maximum control pressure (pneumatic) is 200 psi. The valve is fully adjustable and various springs are available to provide the desired operating range.

The 3300 series relay valves are all made in bronze and stainless steel and all provide years of trouble free service in a salt water environment.

This valve is also available with dual piloting on special request.

SCHEMATIC SYMBOL



SPECIFICATIONS

Weight: 3 lb. (1.4 kg)

Materials: die cast silicon bronze and stainless steel hardware

Maximum Supply Pressure: 200 psi (13.8 bar)

Maximum Pilot Pressure: 700 psi (48 bar)

Operating Temperature Range: -40°C to +90°C

Pipe Port Size: 1/4" NPT

ORDERING INFORMATION

Model Designation --

- A – Standard inlet cap
- B – With flow control inlet cap
- C – Heavy spring, 40-120 psi range
- CC – Extra heavy spring, 100-160 psi range
- D – Light spring, 25-60 psi range
- DD – Extra light spring, 10-20 psi range
- E – Left hand model
- F – Right hand model

The standard Model 3324 Relay Valve is supplied as follows:

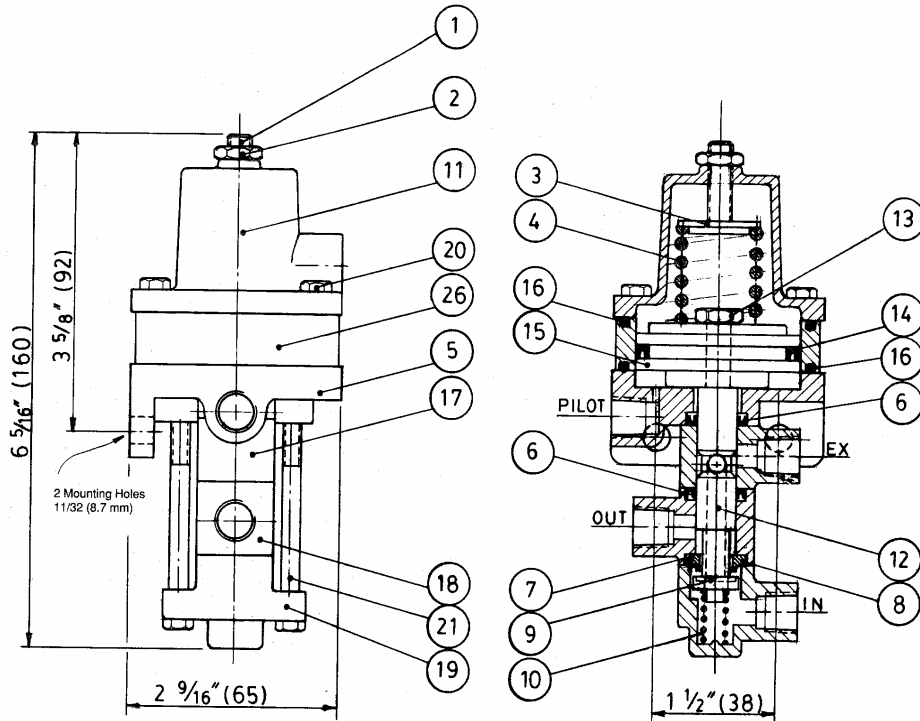
- Standard inlet cap
- Heavy spring 40-120 psi
- Left or right hand model

To order, state model number followed by desired designation letter codes.

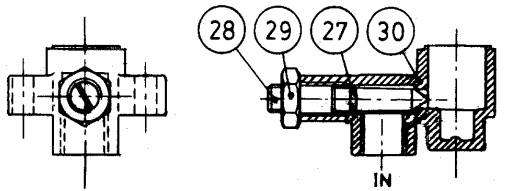
Example: 3323 ACE for left hand model

A repair kit 3323-RK with all the seals is also available.

DIMENSIONS AND PARTS LIST MODEL 3323



All dimensions in inches (mm)



ALTERNATIVE INLET CAP WITH FLOW CONTROL

Item	Qty	Part Number	Description
1	1	1016-1116	Setscrew
2	1	1022-0211	Jam nut
3	1	3325-0001	retainer
*4	1	1201-0050	Spring 10-20 psi
*4	1	1201-0010	Spring 25-60 psi
4	1	1201-0012	Spring 40-120 psi
5	1	3325-0013	Vent port (R.H.)
5	1	3325-0002	Vent port (L.H.)
6	2	1102-0005	"U" Cup
7	1	3804-0004	Seat
8	1	1101-0016	"O" Ring
9	1	3804-0004	Poppet
10	1	1201-0009	spring
11	1	3325-0005	End cap
12	1	3325-0015	Spool
13	1	1022-0262	Jam nut
14	1	1102-0021	"U" Cup
15	1	3326-0008	Piston
16	2	1101-0139	"O" Ring
17	1	3325-0008	Exhaust port
18	1	3325-0009	Outlet port
19	1	3325-0010	Inlet cap
20	4	1001-1020	Hex head capscrew
21	2	1001-1044	Hex head capscrew
26	1	3326-0009	Spacer
*27	1	1101-0008	"O" Ring
*28	1	3325-0011	Needle
*29	1	1022-0262	Jam nut
*30	1	3325-0012	Inlet cap

* Optional