

Other items required

1 3300/33C or 4300 style control cable.

1. LOCATE AND MOUNT CONTROL HEAD

- Select a location on either the right or left side of the wheel box, panel, etc.
- Adequate clearance must be provided to allow the hand lever to move through its full range. Be sure there is ample space behind the mounting surface and an unobstructed path for the push-pull cable.
- Cut or drill a 1-1/8" diameter hole in the mounting surface selected.
- Disassemble throttle arm (10) by removing screw (12) and lockwasher (11).
- Insert control assembly in mounting hole and fasten securely with screws (7). Reassemble throttle arm (10). SEE NOTE BELOW.

NOTE

Determine whether PUSH TO OPEN or PULL TO OPEN cable travel is required. Figure 1 illustrates the two basic throttle arm positions.

2. INSTALL CONTROL CABLE

- Run cable down through wheelbox to engine. Cable should be run as straight as possible with no bends less than 8" radius.

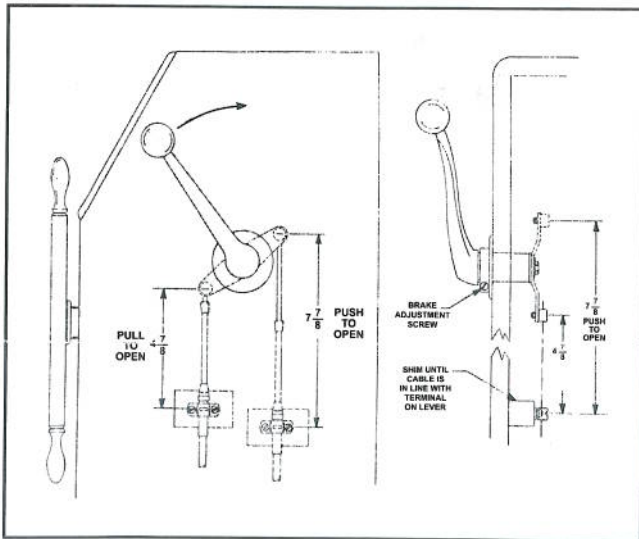


FIGURE 1

- Remove cable terminal (14) from throttle arm (10). Thread terminal onto cable rod until 3/16" is through terminal. Hold terminal to prevent it from turning and tighten cable nut against terminal. Replace terminal in throttle arm and secure with cotter pin (16).
- Mount cable clamp (13) and shim (15) in line with throttle arm (See Fig. 1) and positioned so that movement of the cable sleeve from its center position is equal when the control head hand lever is moved from idle to full throttle. It may be necessary to shim further under the cable clamp as illustrated in Figure 1.

3. CONNECT CONTROL CABLE TO ENGINE

- Follow the procedure described in the throttle connection kit instructions.

4. FINAL CHECK AND ADJUSTMENT

- Operate the control head hand lever several times. The carburetor throttle arm should move through its full range.
- Apply only enough braking tension to prevent lever "creep", further tightening will simply make control difficult to operate. This feature available on CH2410P only.
- To adjust position of control head hand lever, loosen setscrew (18), pull hand lever off shaft (3), reposition as desired and tighten setscrew.

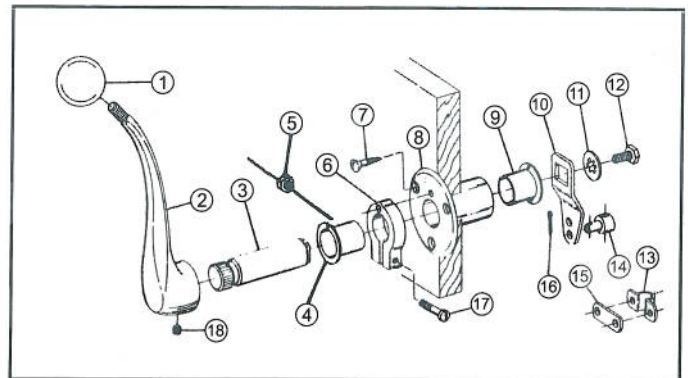


FIGURE 2

| ITEM | DESCRIPTION | NO. REQ'D |
|------|---|-----------|
| 1 | Knob | 1 |
| 2 | Hand lever | 1 |
| 3 | Shaft | 1 |
| 4 | Bearing | 2 |
| 5 | Nut (CH2410P) | 1 |
| 6 | Brake Band (CH2410P) | 1 |
| 7* | Screw, Oval Hd. Slot Wood #10 x 1 | 3 |
| 8 | Housing | 1 |
| 9 | Bearing (See Item #4) | - |
| 10 | Throttle Arm | 1 |
| 11 | Lockwasher, Int. Tooth 1/4 | 1 |
| 12 | Screw, Hex Hd. Cap 1/4-28 UNF x 1/2 | 1 |
| 13* | Cable Clamp 30 or 40 series | 1 |
| 14* | Cable Terminal 30 or 40 series | 1 |
| 15* | Shim 30 or 40 Series | 1 |
| 16* | Cotter Pin | 1 |
| 17 | Screw, Flat Hd. Slot #10-32 UNF x 7/8 (CH2410P) | 1 |
| 18 | Setscrew | 1 |

*Instruction sheets and parts in Hardware Kit 062279

Teleflex Marine

640 North Lewis Road

Limerick, PA 19468

Phone: 610 495 7011

FAX: 610 495 7470

www.teleflexmarine.com